



齒型皮帶

XL 規格 (齒距 : 5.08mm)

表示方法 : 130

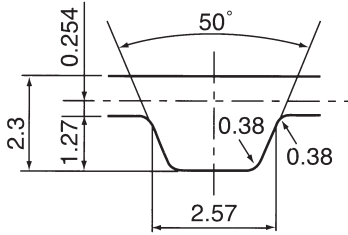
XL 037

13.0 inch長 ←

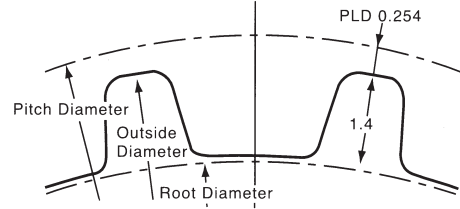
規格

← 0.37 inch=9.5mm寬

皮帶齒輪尺寸



齒輪齒型尺寸



XL 皮帶長度

規格	長度(mm)	齒數
*46XL	116.840	23
50XL	127.000	25
58XL	147.320	29
60XL	152.400	30
*66XL	167.640	33
70XL	177.800	35
74XL	187.900	37
76XL	193.040	38
78XL	198.120	39
80XL	203.200	40
82XL	208.280	41
84XL	213.360	42
*86XL	218.440	43
88XL	223.520	44
90XL	228.600	45
92XL	233.680	46
94XL	238.760	47
96XL	243.840	48
98XL	248.920	49
100XL	254.000	50
102XL	259.080	51
104XL	264.160	52
106XL	269.240	53
108XL	274.320	54
110XL	279.400	55
*112XL	284.480	56
114XL	289.560	57
116XL	294.640	58
118XL	299.720	59
120XL	304.800	60
122XL	309.800	61
126XL	320.040	63
128XL	325.120	64
130XL	330.200	65
*134XL	340.360	67
136XL	345.400	68
138XL	350.520	69
140XL	355.600	70
142XL	360.680	71
*144XL	365.760	72
146XL	370.840	73
148XL	375.920	74
150XL	381.000	75
152XL	386.080	76
154XL	391.160	77
156XL	396.240	78
158XL	401.320	79
160XL	406.400	80
162XL	411.480	81
164XL	416.560	82
166XL	421.640	83
170XL	431.800	85
172XL	436.880	86
174XL	441.960	87
176XL	447.040	88

規格	長度(mm)	齒數
178XL	452.120	89
180XL	457.200	90
182XL	462.280	91
184XL	467.360	92
188XL	477.520	94
190XL	482.600	95
192XL	487.680	96
194XL	492.760	97
196XL	497.840	98
198XL	502.920	99
200XL	508.000	100
202XL	513.080	101
204XL	518.160	102
206XL	523.240	103
*208XL	528.320	104
210XL	533.240	105
212XL	538.480	106
214XL	543.560	107
218XL	553.720	109
220XL	558.800	110
224XL	568.960	112
228XL	579.120	114
230XL	584.200	115
*232XL	589.280	116
234XL	594.360	117
240XL	609.600	120
244XL	619.760	122
248XL	629.920	124
250XL	635.000	125
258XL	655.320	129
260XL	660.400	130
*264XL	670.560	132
266XL	675.640	133
270XL	685.800	135
*274XL	695.960	137
276XL	701.040	138
278XL	706.120	139
280XL	711.200	140
*284XL	721.360	142
*286XL	726.440	143
290XL	736.600	145
*296XL	751.840	148
298XL	756.920	149
300XL	762.000	150
302XL	767.080	151
*306XL	777.240	153
310XL	787.400	155
*316XL	802.640	158
320XL	812.800	160
322XL	817.880	161
*330XL	838.200	165
332XL	843.280	166
340XL	863.600	170
*344XL	873.760	172
348XL	883.920	174

規格	長度(mm)	齒數
*350XL	889.000	175
352XL	894.080	176
356XL	904.240	178
360XL	914.400	180
*362XL	919.480	181
364XL	924.560	182
372XL	944.880	186
376XL	955.040	188
380XL	965.200	190
*382XL	970.280	191
384XL	975.360	192
386XL	980.440	193
390XL	990.600	195
*392XL	995.680	196
396XL	1,005.840	198
400XL	1,016.000	200
404XL	1,026.160	202
412XL	1,046.480	206
*424XL	1,076.960	212
*432XL	1,097.280	216
*434XL	1,102.360	217
*438XL	1,112.520	219
444XL	1,127.760	222
450XL	1,143.000	225
454XL	1,153.160	227
460XL	1,168.400	230
470XL	1,193.800	235
490XL	1,244.600	245
498XL	1,264.920	249
*506XL	1,285.240	253
522XL	1,325.880	261
532XL	1,351.280	266
540XL	1,371.600	270
*554XL	1,407.160	277
560XL	1,422.400	280
580XL	1,473.200	290
*592XL	1,503.680	296
630XL	1,600.200	315
648XL	1,645.920	324
670XL	1,701.800	335
*672XL	1,706.880	336
*736XL	1,869.440	368
*770XL	1,955.800	385
810XL	2,057.400	405
860XL	2,184.400	430
*888XL	2,255.520	444

XL 標準皮帶寬度

皮帶寬(mm)	6.4	9.5	12.7	19.1	25.4
皮帶寬代號	025	037	050	075	100

$$\text{齒輪節圓直徑 (PD)} = \frac{P \times N}{\pi}$$

$$\text{齒輪外徑 (OD)} = \text{PD} - 2 \times \text{PLD}$$

P : 皮帶齒距(mm)

N : 皮帶齒輪齒數

$\pi = 3.14159$

XL · PLD : 0.254mm